

MyVodkaMaker

Maintenance & Spares Kit

V1.00

Basic Kit

Heater mount Maintenance
Unblocking Port Maintenance
NTC Maintenance kit
Spares kit.

Purchase online via (\$29 + shipping):

<https://www.myvodkamaker.com/cart.html?product=MaintenanceKit>

These maintenance fixes apply to Plus and Mini's shipped before May 2025, All units shipped from May 2025 have the clamp and unblocking Port features already included.

Packing List

M3 bolt and nut to re-mount PCBs

Heater Clamps and bolts

Thermal Wrap, and outer wrap, and cable ties

4.76mm Inline connectors

1.8mm Nylon Line to clear the blockage

60ml Syringe and short link tube

Power switch and jumper wire

Button and jumper wire

NTC beads and heatshrink

Pump Tube+Pump head

MyVodkaMaker Heater mount Maintenance

The purpose is to eliminate/reduce the risk of flooding even when power is low, and the MVM has been cleaned. This can be due to the clamping of the heaters to the boiler relaxing. The upgrade is to fit a stronger set of custom clamps.

Unblocking Port Maintenance

The purpose to add an easy port to be able to unblock the feed tube if it blocks due to debris in the feed line. The method is to fit a coupler that can allow nylon line to be inserted to clear the blockage.

NTC repair kit

The purpose is to repair an NTC that may have been damaged. Damaged NTC's show up on the graph as a low temperature of under 10°C.

Spares kit.

The purpose is to be able to do repairs on various small maintenance problems.

- Power switch and Jumper wire

- Red Button and Jumper wire

- Pump Tube + Pump head

MyVodkaMaker Heater mount Maintenance

The purpose to reduce the risk of flooding even when power is low, and the MVM has been cleaned. The flooding can be due to the clamping of the heaters to the boiler relaxing. The method is to fit a stronger set of custom clamps.

Tools required:

- Side cutter/ scissors
- Screw drivers
- 3mm Drill

Parts in Kit:

- M3 bolt and nut to mount PCBs
- Heater Clamps and bolts
- Thermal paste
- Thermal Wrap, and outer wrap, and cable ties
- Button and button jumper

Procedure:

- Carefully note, or photograph positions of parts, connectors and fittings before undoing them.
- Unscrew and remove black covers.
- Unscrew front plate from the front copper heat sink.
- Unscrew front plate feet from back plate at the bottom.
- Remove the front plate by moving it down, off the spouts.
- Take note/photo of the wire connections going into the PCB.
- Unplug the PCB cables and drill out the PCB rivets then remove the PCB.
- Now you will have good access to the boiler section.
- Snip the cable ties, remove the outer wrapping of the boiler.
- Unwrap outer wrapping to just above and just below the boiler.
- Remove the fibre sheet (observe how it is positioned - V-cut toward the back).
- On the new clamps, remove screws.
- Slightly bend the clamp wider so the clamp can fit over the heaters.
- The screw position must point backward, not frontward as the case would not close.
- Fit one clamp 1/3 above, and one 1/3 below the centre of the boiler.
- Fit the screws and tighten the clamps.
- Fit back the fibre sheet, or use a new one. (this is vital)
- Wrap back the outer wrapping.
- Fit the PCB, and connect the cables (align the 16 way cable carefully)
- Fit the front plate.
- Fit the covers.
- Run to test.

Most likely faults after the work:

- Ribbon cable miss aligned.
- Damage to the button or it's cable - Check button repair section.

MyVodkaMaker Unblocking Port maintenance

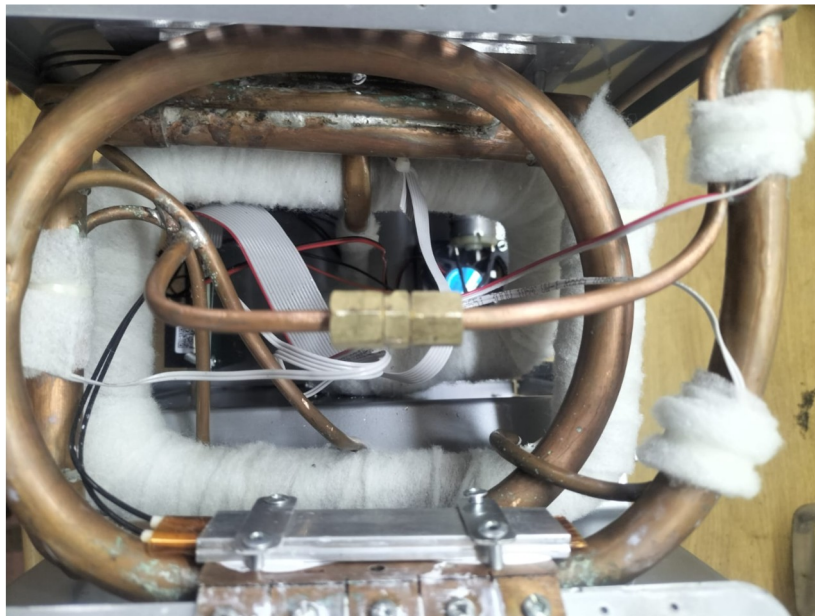
The purpose to add a port to be able to unblock the feed tube if it blocks due to debris in the feed line. The correction is to fit a coupler halfway up the feed line that can allow nylon line to be inserted to clear the blockage.

Tools required:

- Side cutter/ scissors
- Screw drivers
- 2x pliers or spanners
- 3mm Drill
- Hacksaw blade
- Sand paper (+- 200 grit)

Parts in Kit:

- 4.76mm Inline connectors
- 2.0mm Nylon String
- 60ml Syringe and short coupling tube



Inline coupler

Procedure to fit the coupler:

Carefully note, or photograph positions of parts and fittings before undoing them.

- Unscrew and remove black covers.

- Follow the feed line from the pump.

- Locate a suitable and accessible location to fit the coupler. Such as in image above.

- Use the hacksaw blade and cut the line.

- Use sandpaper to clean-up burrs on the line ends.

- Disassemble the Coupler,

 - Insert the nuts onto the line.

 - Insert the rings onto the line

 - Fit the coupler body, push the lines in as deep as possible.

 - Tighten the coupler with pliers until almost completely closed.

Pressure test to check for leaks.

* this should not require any PTFE tape for sealing

Fit the covers, Run to test.

Procedure to unblock:

Follow the procedure in :

<https://www.myvodkamaker.com/doc/BlockedfeedtubetroubleshootingV2.pdf>

NTC maintenance kit

The purpose is to repair an NTC that may have been damaged. Damaged NTC's show up on the graph as a low temperature of under 10°C or high at over 150°C.

Tools required:

Side cutter/ scissors

Screw drivers

Parts in Kit:

NTC's

Heat shrink tubing

cable ties.

Spares kit.

The purpose is to be able to do repairs on various small maintenance problems.

Power switch and Jumper wire

Red Button and Jumper wire

Pump Tube + Pump head